

Bruce Linthicum, Corvus International's Director of Design

Boca Raton, Aug 25 Bel Mare's residents feel fortunate that Bruce Linthicum is the Design Director responsible for the beautiful public and private living spaces in Bel Mare at Riviera Dunes.

Linthicum's experience as both artist and top designer with several premier interior design firms has enabled him to achieve a vision for Bel Mare unlike any other community in Southwest Florida.

When Linthicum was asked about the inspiration for both the naming of Bel Mare and its floor plans and the look of the spaces, Bruce replied, "I've been fortunate to have spent much time in the Ligurian district of Italy, also known as the Italian Riviera. Rapallo and Levante are actually cities on the coast of Italy. San Remo is near Monaco, and Fiori and Sole are small towns. Bella Vista, of course, means

beautiful view—which our Bella Vista Penthouse certainly has! All of these names inspired our Bel Mare floor plan names. And Bel Mare means beautiful sea." Some might be surprised

world Mediterranean. The Italian style is hardly limited to the classical look. There is a fresh and clean modern look that I preferred for Bel Mare's spaces."



The Owners' Lounge
130 Riviera Dunes Way, Building One

that Bruce did not choose a classical Italianate theme for the interior spaces. "The design of the building is clean and contemporary, not old-

Linthicum, a Baltimore, Maryland, native was graduated from Clemson University. After nine years as a metal sculptor, he opened his design and build firm in Key West. His projects have been published in *Architectural Digest* (12/97 and 5/99), the *Robb Report*, *Florida Design*, and *Showboats International*, among other publications. The yacht he designed in the Netherlands was 196 ft. in length. Bruce joined Corvus as Director of Design in 2004. His responsibilities include design development, review of architectural plans, detailing, and concepts.

Peggy Wingardh



Birds find Sanctuary

Sept 12, Bel Mare—Bel Mare can now add "beautiful bird watching" to its fabulous lifestyle! If you happen to notice a pair of pink-feathered flamingo-like birds flying overhead or wading around the freshwater lake at Bel Mare, you will be witnessing the gorgeous pink birds called roseate spoonbills.

Plume hunting in the 1800s and habitat degradation decimated the pink bird's population and by 1935, less than 20 pairs were counted in Florida. After 1950, with the establishment of Everglades National Park, the roseate spoonbills numbers began to increase. According to the

Tampa Bay Estuary, "these beautiful birds are now seen in our coastal area in greater numbers and they are snagging everyone's attention"—including Bel Mare residents.

Spoonbills share the same pink plumage and long legs as flamingos, but are members of the ibis family. Smaller than flamingos, roseate spoonbills grow to a height of 32 inches with a wingspan of 50 inches, have shorter necks, spoon-shaped bills. They are found along the south Florida coast from the Florida Keys north to Tampa. The roseate spoonbill is listed as a Species of Special Concern. Residents are pleased that this pair has found sanctuary at Bel Mare.

Peggy Wingardh

Manatee Chamber of Commerce 2007 National Chamber!

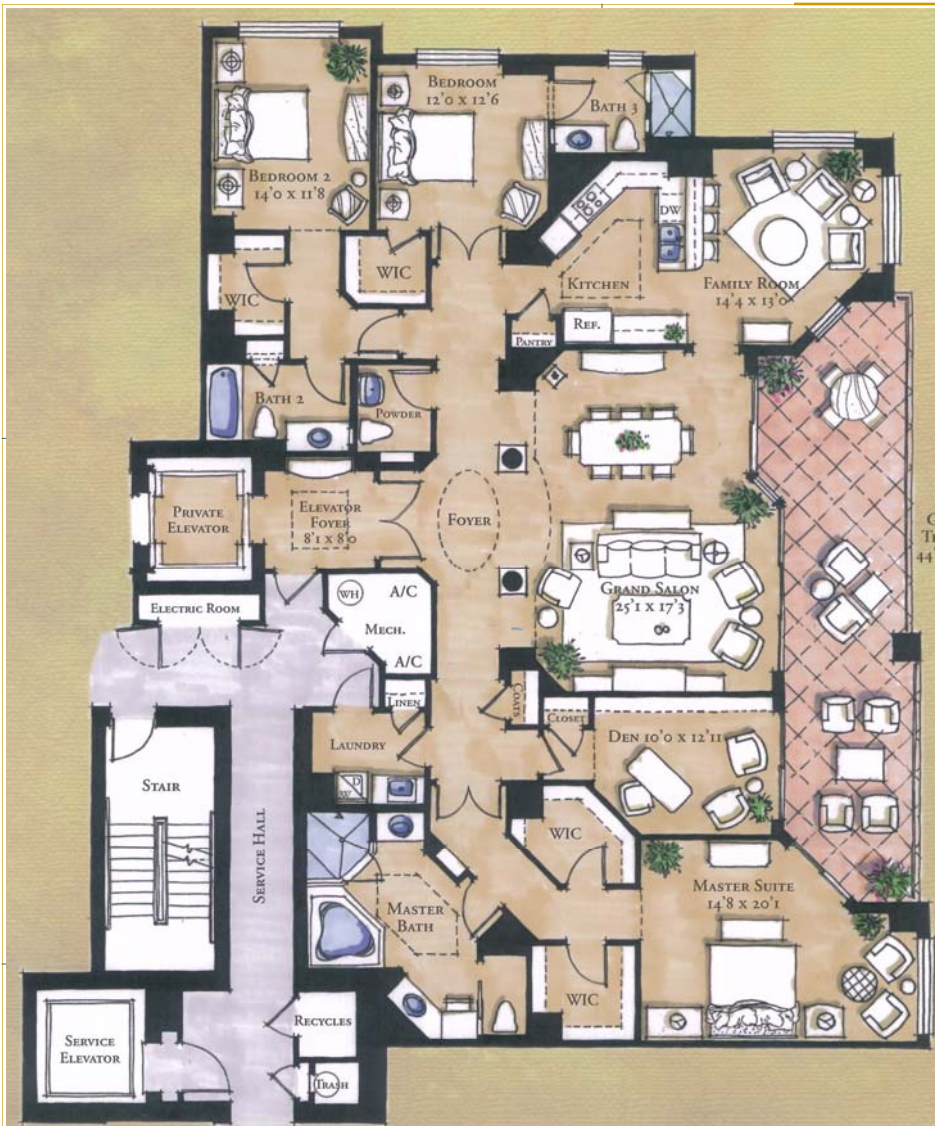
Sacramento, Ca. Aug 3—Bob Bartz, Manatee Chamber President, Jacki Deselski, Chamber Vice President of East County and Community Development, and Debbie Herkert, Economic Development Council Industry Services were present during the national chambers' convention in Sacramento to receive the 2007 National Chamber of the Year award. "Being recognized with the National Chamber of the Year, the week after we were recognized as the Chamber of the Year in Florida for the third

time was positively overwhelming," said Bartz. I credit the awards to our staff, board, and every member of the Manatee Chamber of Commerce. The support that businesses in the economic region give us allows the Chamber to take on an aggressive program of work that touches most issues in our community."

For membership, contact Cheryl Richert, Comptroller, at 941-748-4842, x 115. Information visit www.manateechamber.com.



Bel Mare
Building 1, East Elevation



Featured Floor Plan: The Rapallo

Luxe: (luks) n. LUXURY; adj. SUMPTUOUS
 Etymology: French, from Latin *luxus*

Sophisticated styling and elegance are features that are never fully achieved through upgrades—they must be part of the initial design. Bel Mare’s *Rapallo* with its gorgeous foyer columns, ten foot ceilings, and symmetrical lay-out defines the *luxe* of casual waterfront living with the grace of a cosmopolitan penthouse.

Rapallo’s footprint is a full corner of each building and is located on floors 8 through 12. Upon entering the residence through ten foot double doors from the Rapallo’s private elevator foyer, one is immediately struck by the amazing water view through the expanse of sliding glass doors leading to the 44’ tiled terrace. The homeowner or guest will be captivated by either the Sunrise Harbor view or the Sunset River and Bay view—all the way to the Gulf of Mexico’s blue water. Standard features of this 3 BR, 3.5 BA + Den + Family Rm include oversize crown moulding and baseboards, solid core doors, granite counters, spacious closets, and privately-situated Owner’s Suite. Residents and their guests will enjoy each building’s fantastic amenities: owners’ lounge which opens onto the horizon level deck; theater room with leather recliners, wet bar, and theater lighting; billiards room; conference center; and guest suites. The *luxe* of Bel Mare makes each Bel Mare condominium feel like an estate home.

Corvus International and Sky Sotheby’s International Realty News

July 2007. Broker*Agent magazine announced the inaugural recipient of its new Rising Star award to Ms. Stacy Haas, Director of Sales of Corvus International’s Bel Mare at Riviera Dunes sales team. Haas’ commitment to excellence is noted by many. Clients, her broker, and developer Corvus International all echo the same compliments. “Stacy is a real dynamo. She shows superior effort on a consistent basis. Stacy always has her eye on the ball,” says Chad Roffers, Broker and co-owner of SKY Sotheby’s International Realty. “Stacy has proven to have unending energy. She is creative, gets things done right away and gives it her all,” remarks Tim Morris, CEO of Cor-

vus International.

SKY Sotheby’s, the exclusive on-site brokerage for Corvus’ Bel Mare at Riviera Dunes, signature in the Sarasota-Manatee real estate community is its catalogue of luxury homes. Corvus’ Bel Mare has set the new standard for luxury, estate-home condominiums. Bel Mare’s fabulous amenities offer an unmatched lifestyle for the customers who expect excellence—and they will not be disappointed by Corvus International’s Bel Mare nor Sky Sotheby’s Bel Mare Sales Team.

Bel Mare Sales Team includes Debbie Pendley and Peggy Wingardh. Contact them at 941-721-6055 or www.BelMareLiving.com



Clockwise: Stacy Haas, Peg Wingardh, & Deb Pendley